

Table of Contents

1. **Installation and Uninstallation in FileMaker Pro**

- **FileMaker Version Required**
- **Macintosh Installation and Uninstallation**
- **Windows Installation and Uninstallation**
- **Scripted Installation**

Installation and Uninstallation in FileMaker Pro

FileMaker Version Required

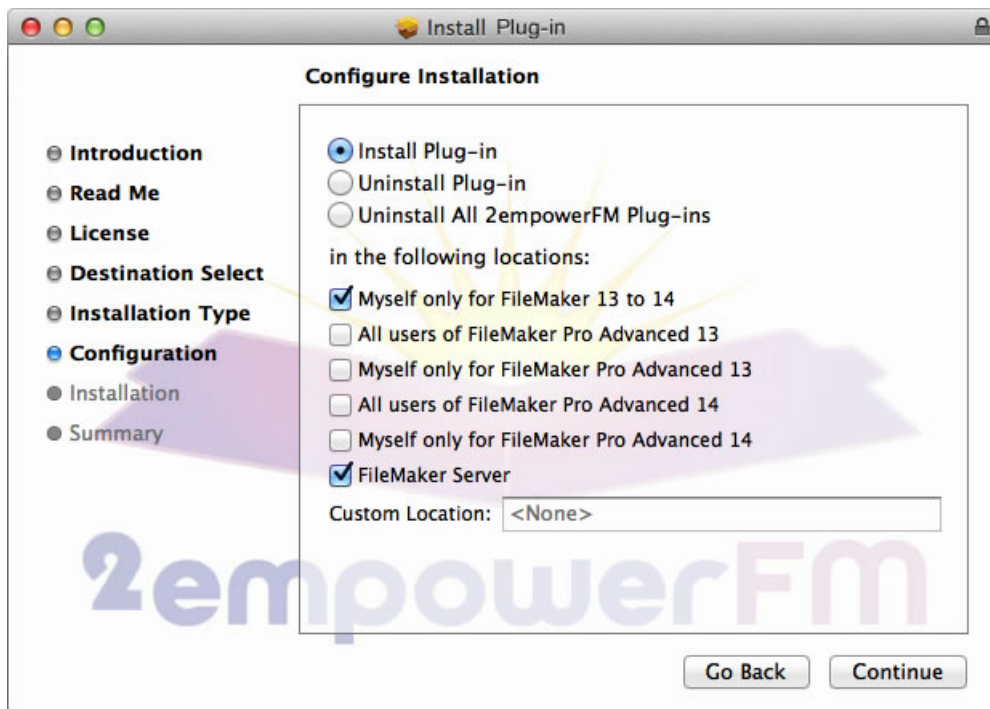


Make sure you're using FileMaker **7 v3 or later**. FileMaker 7 without the **v3 update** available from www.filemaker.com will fail to load the Keyboard and Mouse plug-in and will not display any error to tell you what went wrong.

Macintosh Installation and Uninstallation

1. You must be running OS X 10.6 (Snow Leopard) or later to run the installer described in the next step. If you are using 10.5 (Leopard) or earlier, see the [Manual Installation](#) section farther down. Keyboard and Mouse itself is compatible with OS X 10.5 (Leopard), 10.6 (Snow Leopard), 10.7 (Lion), 10.8 (Mountain Lion), 10.9 (Mavericks), or 10.10 (Yosemite).
2. If you have many copies of FileMaker where you want to install plug-in files, see the [Scripted Installation](#) section farther down. Otherwise, it's easiest to install on a few machines by following the steps below.
3. In the **2empowerFM Keyboard and Mouse v2.42.dmg** file you downloaded (where you found this manual), double click **Install 2empowerFM Keyboard and Mouse**. If you don't see **Install 2empowerFM Keyboard and Mouse**, try downloading the plug-in again and be sure to download the Macintosh version instead of the Windows version.
4. The 2empowerFM installer will guide you through the remainder of the installation process.

The installer will automatically detect locations you can install to:



If you need to install to a custom location, such as to the [Extensions](#) folder of a FileMaker "Runtime" solution, simply click in the **Custom Location** box and choose where you want to install.

The installer also makes sure 2empowerFM plug-ins you previously installed to all installation locations are compatible with the one you're installing and offers to download updates for any that aren't compatible.

Uninstallation

Run the installer and choose **Uninstall Plug-in** or **Uninstall All 2empowerFM Plug-ins** on the page in the above screenshot. Alternately, remove all plug-in files that begin with the name **2empowerFM** from all of the locations mentioned in the [Manual Installation](#) section below.

Manual Installation

For those running OS X 10.5 or earlier, or those who prefer to do a manual installation, please:

- **download the Parent plug-in**
and
- **download the Child plug-in**

Double click each file to unzip it, then copy **both** unzipped plug-in files to **one** of the following locations:

- Yourself only for FileMaker Pro 9 and later:

```
~/Library/Application Support/FileMaker/Extensions
```

- Yourself only for a particular FileMaker Pro version (works only in FileMaker Pro 12 and later):

```
~/Library/Application Support/FileMaker/ <FileMaker Pro or FileMaker Pro Advanced> /  
<version> /Extensions
```

- All users of a particular FileMaker Pro version:

```
/Applications/ <FileMaker version> /Extensions
```

- To reach one of the above locations, open **Finder** (the app you use to manage files and folders), then hold **Command** ⌘ and **Shift** ⇧, then press **G**. A **Go to the folder** dialog will appear. Paste the start of one of the above locations in that dialog and click **Go**.



When installing plug-ins for FileMaker Pro, make sure all 2empowerFM plug-ins are in only **one** of the above FM Pro locations or they may fail to work or even crash FileMaker if you leave old plug-in versions installed. Using the Macintosh Installer is highly recommended as it will ensure there are no duplicate copies of the plug-in in conflicting locations.

If you need help with manual installation, uninstallation, or with the installer, please contact us through support.2empowerFM.com.

Windows Installation and Uninstallation

1. If you have many copies of FileMaker where you want to install plug-in files, see the **Scripted Installation** section farther down. Otherwise, it's easiest to install on a few machines by following the steps below.
2. Make sure you are running Windows 2000 service pack 4, Windows XP service pack 2, Windows Vista, or Windows 7 through 8.1.
3. Make sure FileMaker is not open.
4. Open the **Install** folder inside the **2empowerFM Keyboard and Mouse v2.42.zip** file you downloaded (the same file that contains this manual).
5. Copy the following files from the **Install** folder:

```
2empowerFM.fmx  
and  
2empowerFM.fmx64  
and  
2empowerFM_Keyboard_and_Mouse.fmx  
and  
2empowerFM_Keyboard_and_Mouse.fmx64
```



If you have file extensions hidden, you won't see **.fmx** or **.fmx64** at the end of each file name, so it will look like you have two pairs of files with the same name.

It's easiest to just copy all four files, but technically you only need the two plug-ins with the **.fmx** extension if you are running FileMaker Pro in 32-bit mode, whereas you need the two plug-ins with the **.fmx64** extension if you are running FileMaker Pro in 64-bit mode. Note that FileMaker 13 and earlier are only available in 32-bit mode, whereas FileMaker 14 and later can be installed in 32 or 64-bit mode.

to **one** of the following locations:

- Yourself only for FileMaker Pro 9 and later:

```
\Users\ <your user name> \AppData\Local\FileMaker\Extensions
```

- Yourself only for a particular FileMaker Pro version (works only in FileMaker Pro 12 and later):

```
\Users\ <your user name> \AppData\Local\FileMaker\
<FileMaker Pro or FileMaker Pro Advanced> \ <version> \Extensions
```

- All users of a particular FileMaker Pro version:

```
\Program Files ... \ <FileMaker version> \Extensions\
```

Note: The ... above will be (x86) for 32-bit FileMaker installations or blank for 64-bit FileMaker.



Make sure all 2empowerFM plug-ins are in only one of the above locations or they may fail to work or even crash FileMaker if you leave old plug-in versions installed.

If **2empowerFM.fmx** already exists in the location you are installing to, replace it with the version that came with **2empowerFM_Keyboard_and_Mouse.fmx**. When you start FileMaker, a dialog will tell you if other 2empowerFM plug-ins are not compatible with the newer **2empowerFM.fmx**. In that case, please visit www.2empowerFM.com to download and install the latest version of each plug-in you are using.

Uninstallation

Remove all plug-in files that begin with the name **2empowerFM** from each of the following locations:

```
\Users\ <your user name> \AppData\Local\FileMaker\Extensions
```

```
\Users\ <your user name> \AppData\Local\FileMaker\Extensions\
<FileMaker Pro or FileMaker Pro Advanced> \ <version> \Extensions
```

```
\Program Files (x86)\ <FileMaker version> \Extensions\
```

Scripted Installation



Installing a plug-in via FileMaker scripts is useful if you need to install a plug-in on many machines at a company. If this is your first time installing the plug-in, we recommend that you skip this section and use the **Macintosh Installation and Uninstallation** or the **Windows Installation and Uninstallation** sections above.

FileMaker 12 and later provide an **Install Plug-in File** script step that can be used to install 2empowerFM plug-in files embedded into FileMaker database **Container** fields. FileMaker versions before 12 could also install plug-in files using a script, but only by using plug-in files placed in a special location on FileMaker

Server. Either method takes longer to set up than a typical install but can save time if you need to install or upgrade plug-ins on a number of FileMaker systems as soon as a database that needs the plug-ins is opened.



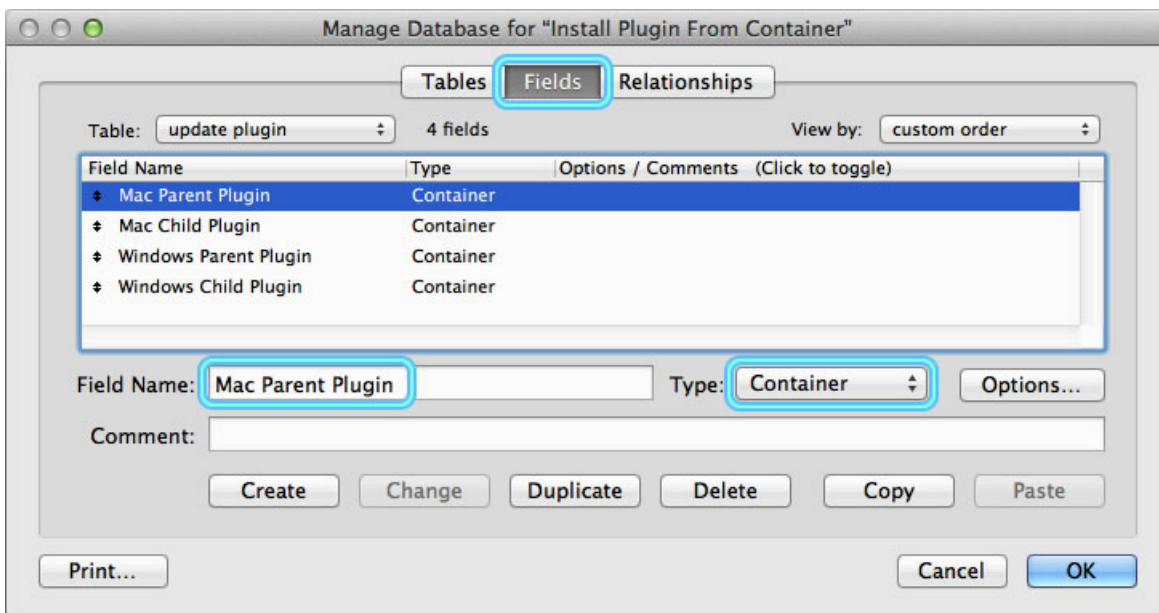
Whatever scripted method you use to install plug-in files, it's important to install all 2empowerFM Child plug-ins (such as **2empowerFM_Keyboard_and_Mouse**) before installing the one 2empowerFM Parent plug-in (**2empowerFM_Keyboard_and_Mouse.fmplugin** on Mac or **.fmx** on Windows). The same Parent plug-in is used by all Child plug-ins, and all Child plug-ins have longer names such as **2empowerFM_SQL_Runner** or **2empowerFM_Text_Toolkit**.

The Parent plug-in is responsible for telling FileMaker which plug-in functions are available, so if the Parent is installed before a Child plug-in, the Parent will not know it needs to make the Child's plug-ins functions available to FileMaker. If you accidentally install the Parent plug-in first, you can restart FileMaker after installing Child plug-ins to make their functions available.

To install plug-ins in FileMaker 11 and earlier, search the internet for "**FileMaker Server Guide to Updating Plug-ins**" to find FileMaker's official guide.

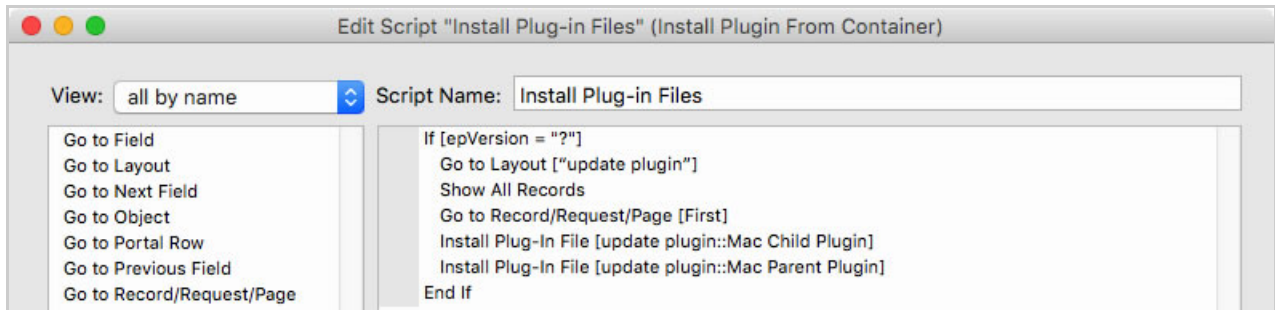
To install plug-ins in FileMaker 12 or later, use FileMaker 12's new **Install Plug-in File** script step as follows:

1. Create or open an existing FileMaker database in which you want to embed plug-in files to be installed.
2. Open the **File > Manage > Database...** menu.
3. In the **Tables** tab, create a new table called **update plugin**.
4. In the **Fields** tab, create a new **Container** field to store the 2empowerFM parent plug-in and an additional **Container** field to store each child plug-in you want to install. You will need an additional set of containers to store Macintosh and Windows plug-in versions if you need to install both:



5. Go to the **update plugin** layout that should have been automatically created when you created the **update plugin** table.
6. Add all the **Container** fields you created to the **update plugin** layout.
7. Click the **New Record** button at the top of the **update plugin** layout to insert exactly one record. The layout should contain 1 and only 1 record.
8. For Macintosh plug-ins, download plug-in files using links in the **Manual Installation** section. Unzip the files you downloaded, then click and drag the **2empowerFM.fmplugin** file to the **Mac Parent Plugin** field you created on the FileMaker layout. Drag the **2empowerFM_Keyboard_and_Mouse.fmplugin** file to the **Mac Child Plugin** field. If dragging files isn't working, try right clicking a container, then choose **Insert File...**
9. For Windows plug-ins, download **2empowerFM Keyboard and Mouse v2.42.zip** and open its **Install** folder. Drag the **2empowerFM.fmx** file to the **Windows Parent Plugin** field you created on the FileMaker layout. Drag the **2empowerFM_Keyboard_and_Mouse.fmx** file to the **Windows Child Plugin** field. If dragging files isn't working, try right clicking a container, then choose **Insert File...**

10. Create a FileMaker script to install plug-in files that looks something like this:



11. If you find that FileMaker tells you **epVersion** is an unknown function, you will need to run the two **Install Plug-in File** script steps above without the **If/End If** around them.
12. Once the script is saved with a call to **epVersion** in it, if you load the script on another machine where the plug-ins aren't installed, the **If** statement above will change to `If [<Function Missing> = "?"]` which will still evaluate to true and so the **Install Plug-in File** script steps will be run to install the plug-ins.
13. If you ever need to upgrade older plug-in files to newer ones, you can change the **If** statement above to `If [epVersion ≠ "<new version>"]` where **<new version>** is whatever value **epVersion** returns in the new version you want to install.
14. If you need to detect whether to install Macintosh or Windows plug-in files, add `If [Get (SystemPlatform) = 1]` to your script and when true, install Macintosh plug-ins, otherwise install Windows plug-ins.